



MAXIMUM®

FIANDRE EXTRALITE



New Delhi | Kishangarh (Raj.) | Ahmedabad

SP-27, Phase-Vth,
RICO Industrial Area,
Madanganj,
Kishangarh - 305801 (Raj.)
M : +91 97994 58000

68/2,
Najafgarh Road,
Moti Nagar,
New Delhi- 110015
M : +91 9999800071

Showroom : 1411,
14th Floor, Shapath V,
SG Highway,
Ahmedabad - 380015
T : +91 079 40036948

✉ : aclasssurfaces@gmail.com

🌐 : www.aclassmarble.co.in

📱 : [f](#) [i](#) [t](#) [v](#) [i](#) [n](#) [g](#) : [aclassmarble](#)



FORMATS

300x150 cm & 300x100 cm

The several decades of experience, aptitude for experimenting and ability for innovation. GranitiFiandre has been able to combine ceramic tradition and technology, respect for the environment and research. These characteristics have lead Fiandre, a leader in producing high-end, fully body porcelain stoneware-to create a new material for architecture and design: Maximum, the first porcelain stoneware offers its range with new "smart" formats, such as 300x150 cm and 300x100 cm.



THICKNESS

A new concept of creativity tailored like a second skin in 6 MM thickness.



MAXIMUM FIANDRE EXTRALITE®

Maximum slabs, in addition to the exceptional size, offer the novelty of a minimum thickness. The technology available has made it possible to create stunning slabs in an astonishing size associated with a minimum thickness of 6 mm and surfaces without any harshness: characteristics that make it an "essential" material, despite the outstanding size for this feature.

FINISHES



POLISHED

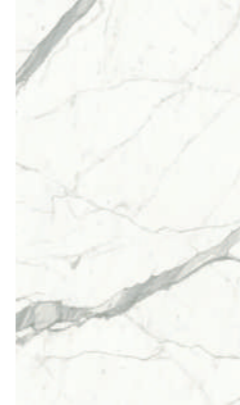


HONED

The Marmi Maximum materials are available with two finishes - Polished and Honed, to meet various aesthetic and application requirements. Maximum, the result of the most advanced research combining performances and aesthetics, is the first 100% porcelain stoneware material in such impressive sizes made in completely polished finish as well. This feature bestows additional value to a product already recognized as one of a kind.



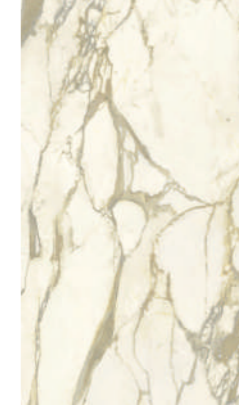
MARMI MAXIMUM®



CALACATTA STATUARIO
Polished
300 X 150 cm / 3 x 1.5 m



CALACATTA LIGHT
Polished
300 X 150 cm / 3 x 1.5 m



CALACATTA ELITE
Polished
300 X 150 cm / 3 x 1.5 m



BRIGHT ONYX
Polished
300 X 150 cm / 3 x 1.5 m



GOLD ONYX
Polished
300 X 150 cm / 3 x 1.5 m



SOFT ONYX
Polished
300 X 150 cm / 3 x 1.5 m



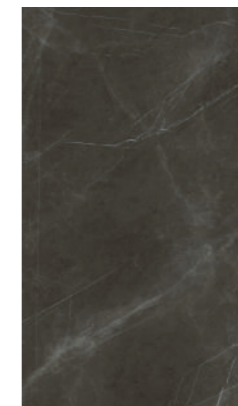
ATLANTIC GREY
Polished
300 X 150 cm / 3 x 1.5 m



NEBULA GRIGIA
Polished
300 X 150 cm / 3 x 1.5 m



GLAM BRONZE
Polished
300 X 150 cm / 3 x 1.5 m



PIETRA GREY
Polished
300 X 150 cm / 3 x 1.5 m

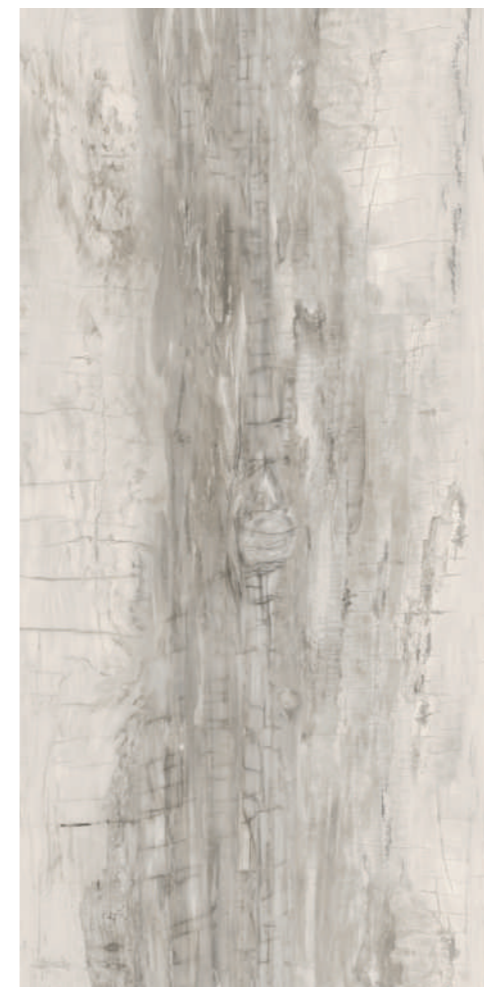


NERO SUPREMO
Polished
300 X 150 cm / 3 x 1.5 m





EMINENT WOOD
MAXIMUM®



EMINENT GREY
Polished
300 X 150 cm / 3 x 1.5 m

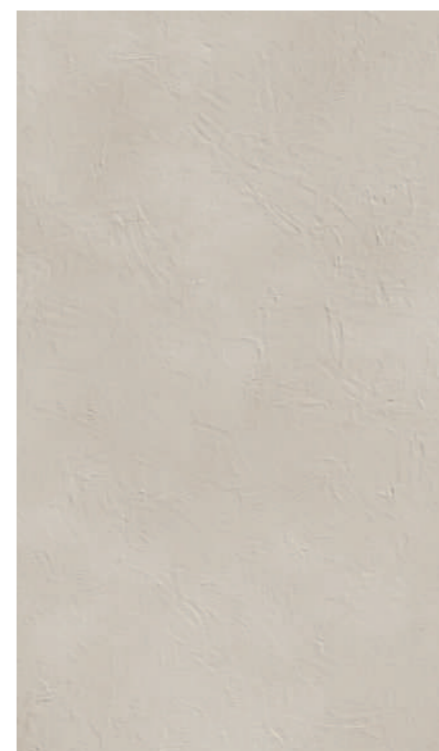


EMINENT BROWN
Polished
300 X 150 cm / 3 x 1.5 m

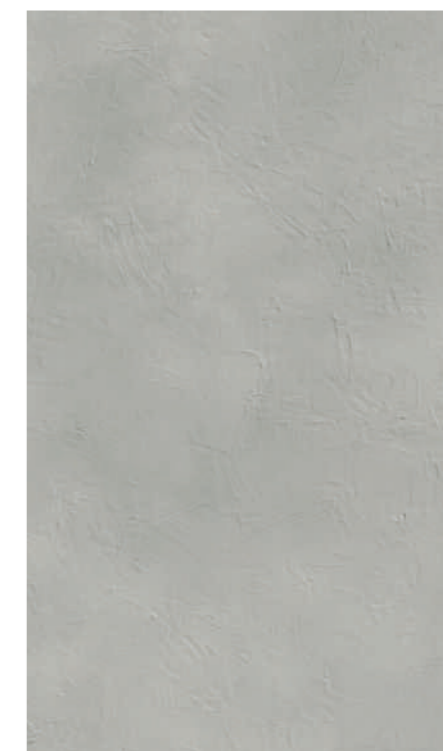




HQ RESIN MAXIMUM[®]



WHITE RESIN
Honed
300 X 100 cm / 3 x 1 m



CINDER RESIN
Honed
300 X 100 cm / 3 x 1 m



GREY RESIN
Honed
300 X 100 cm / 3 x 1 m



DARK RESIN
Honed
300 X 100 cm / 3 x 1 m





MEGALITH MAXIMUM[®]



MEGA WHITE
Honed
300 X 100 cm / 3 x 1 m



MEGA GREY
Honed
300 X 100 cm / 3 x 1 m



MEGA BROWN
Honed
300 X 100 cm / 3 x 1 m



MEGA BLACK
Honed
300 X 100 cm / 3 x 1 m



URBAN GREAT
MAXIMUM®



URBAN GREAT WHITE
Honed
300 X 100 cm / 3 x 1 m



URBAN GREAT IVORY
Honed
300 X 100 cm / 3 x 1 m



URBAN GREAT GREY
Honed
300 X 100 cm / 3 x 1 m















URBAN GREAT DOVE
Honed
300 X 100 cm / 3 x 1 m



TECHNICAL FEATURES

MAXIMUM®
FIANDRE EXTRALITE

MAXIMUM®
FIANDRE EXTRALITE

| Physical properties | Norms | Required standards | Average value of production | Honed | Average value of production | Polished |
|---|---|--|---|--------------|---|--------------|
|  Water absorption | ISO 10545.3 | ≤0,5% | 0,08% | | < 0,1% | |
|  Sizes | ISO 10545.2 | Length and width ±0,6% max Thickness ±5% max Linearity ±0,5% max Ortogonalidad ±0,6% max Surface Flatness ±0,5% max | ±0,1% ±5,0% - ±0,1% ±0,2% | | ±0,1% ±5,0% - ±0,1% ±0,2% | |
|  Modulus of rupture | ISO 10545.4 | ≥35N/mm ² | 50N/mm ² | | 47N/mm ² | |
|  Resistance to deep abrasion | ISO 10545.6 | ≤175 mm ³ | 140 mm ³ | | 140 mm ³ | |
|  Thermal expansion coefficient | ISO 10545.8 | Testing method available | 6 MK ⁻¹ | | 6 MK ⁻¹ | |
|  Thermal shock resistance | ISO 10545.9 | Testing method available | Resistant | | Resistant | |
|  Frost resistance | ISO 10545.12 | No sample must show alterations to surface | Frost proof | | Frost proof | |
|  Chemical resistance | ISO 10545.13 | No sample must show visible signs of chemical attack (acids-basis-additives for pools) except for products containing hydrofluoric acid and derivatives. | Unaffected | | Unaffected | |
|  Color resistance to light | DIN 51094 | No sample must show noticeable colour change | No change in brightness or colour | | No change in brightness or colour | |
|  Brightness (polished) | | | More or equal than natural marble and granite, polished or honed. | | More or equal than natural marble and granite, polished or honed. | |
|  Skid resistance Average coefficient of friction (μ) | DIN 51130 BCR | | R9 | | | |
|  Stain resistance | ISO 10545.14 | Unglazed tiles: testing method available | Resistant to stain | Classe 4 ÷ 5 | Resistant to stain | Classe 2 ÷ 3 |
| Fiandre reserves the right to modify technical and formal details included in this catalogue. | According to the EN 14411 Encl. G/ISO 13006 Encl.G for unglazed dry-pressed ceramic tiles of the group B1a. | | Dry Rubber Wet Rubber Dry Leather | | | |